



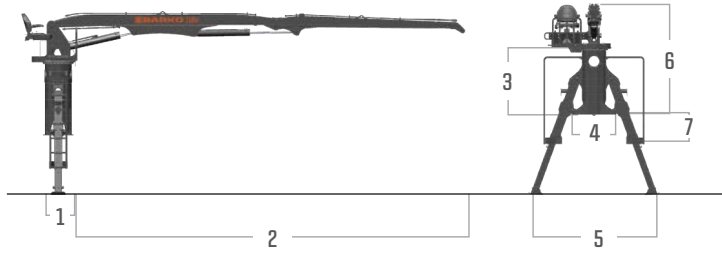
» 110XL LOADER

PRELIMINARY SPECIFICATIONS



The Barko® 110XL Loader delivers high payload at a low total cost of operation. Equipped with standard features that set it apart from the competition, the 110XL lasts longer and works harder to deliver the results you demand.

SPECIFICATIONS



DIMENSIONS

1	2' 1.625" (65 cm)	5	10' 3" (312 cm)
2	27' 5" (836 cm)	6	8' 2" (247 cm)
3	5' 3" (158 cm)	7	2' 11" (89 cm)
4	3' 2" (97 cm)		

Total Operating Weight 6,120 lbs (2,776 kg) loader with cylinders - excluding grapple and options

POWER

Source Customer supplied power take-off

HYDRAULICS

Pump Triple gear pump producing 26/21/15 GPM (98/79/57 LPM) at 1,600 RPM

Operating Pressure 3,200 psi (220 bar) main system

Valves Sectional control type with folding mechanical joysticks

Features Heavy-wall tubing with high pressure hoses; independent swing system with direct-linked foot controls, rotary manifold to allow continuous rotation

SWING SYSTEM

Rotation Continuous rotation on 27" (686 mm) external tooth turntable bearing; foot pedal control

BOOM

Structure Fabricated box style design with all welded construction and wear plates; bronze bushing with grease grooves at boom pivot points

Standard Boom 29' (884 cm)

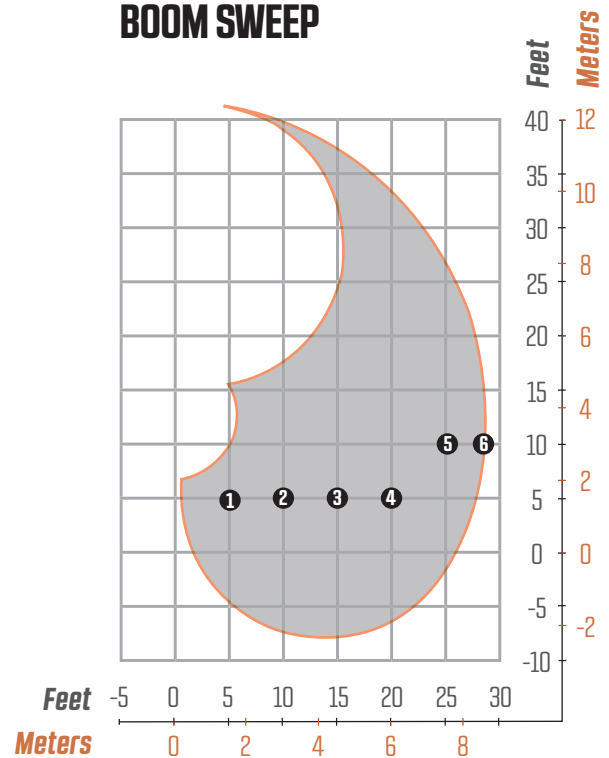
Horizontal Reach 28' 5" (866 cm)

Cylinders Hydraulic cylinders with spherical bearings; heavy wall honed steel tubing; heat-treated cylinder rods with heavy chrome plating

OPTIONS

Spacers to accommodate various frame heights	45 gal. (170 L) hydraulic tank with return line filters
Oil cooler kit with 12-volt fan	Remote in-line hydraulic filter
Left hand platform	LED boom lights (2)

BOOM SWEEP



MAXIMUM FRONT LIFT CAPACITY

29' (8.8 m) straight boom, less attachment.

	Radius	Lift		Radius	Lift
1	5' (1.5 m)	3,110 lbs (1,411 kg)	4	20' (6.1 m)	6,050 lbs (2,744 kg)
2	10' (3.0 m)	12,100 lbs (5,488 kg)	5	25' (7.6 m)	4,810 lbs (2,182 kg)
3	15' (4.6 m)	8,100 lbs (3,674 kg)	6	Full Reach	1,770 lbs (803 kg)

STANDARD FEATURES

OPERATOR PLATFORM

Rotating platform with beneath-the-seat style valve mounting and foot swing pedal
8-pass electrical collector

Comfortable, locking, fold-down seat with armrests

STABILIZERS/SUBFRAME/PADS

Telescopic stabilizers with 43" (109 cm) stroke cylinders
Bolt on stabilizer housings

Dual stabilizer controls for ground or platform operation

STANDARD FEATURES

Mounting hardware supplied
Dual ladders
Load securing posts
Fold down joysticks

Continuous rotation for electric and hydraulic
House lock safety pin

* Specifications are subject to change.



BARKO HYDRAULICS, LLC

One Banks Ave.
Superior, WI 54880

P: 715.395.6700
info@barko.com | www.barko.com